



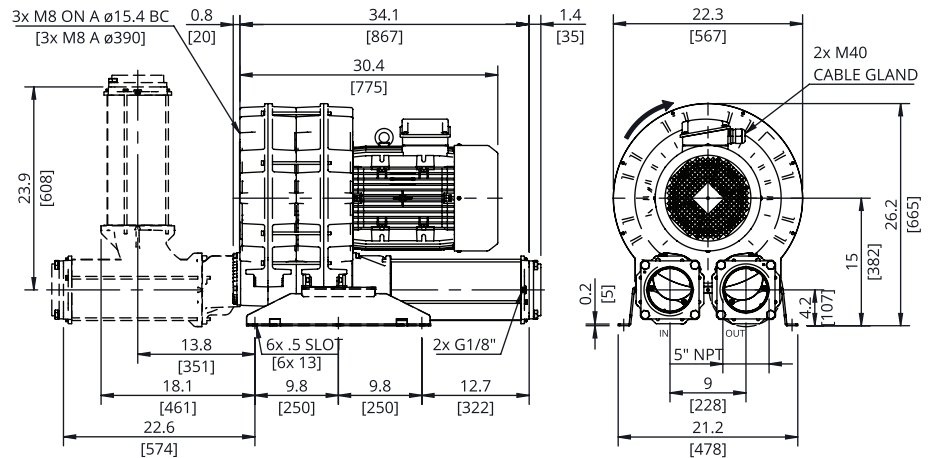
**e11-TS**

### Evolution Series Technical Characteristics

- Premium efficient motor
- High efficiency impeller
- Mountable in any position
- Maintenance free operation
- TEFC (IP55)

### Optional Features

- Anodized aluminum components for corrosion resistance
- Increased sealing



### Technical Specifications

	HP	Hz	Open Flow (cfm)	Max Pressure in. H <sub>2</sub> O	Max Vacuum in. H <sub>2</sub> O	Efficiency	Voltage	FLA	Starting Current Ratio <sup>1</sup>	dB(A) <sup>2</sup>	Weight (lb)
SCL e11-TS-25-3	25	60	1304	50	50	91.7%	208-230/460	62 / 31	12.5	86	463.0
		50	1092	90	100	92.4%	200/400	69 / 34.5		82	
SCL e11-TS-25-3-575	25	60	1304	50	50	91.7%	575	24.8	12.5	86	463.0
SCL e11-TS-30-3	30	60	1304	70	70	91.7%	208-230/460	71.6 / 35.8	10.6	86	489.4
		50	1092	110	110	92.7%	200/400	77.8 / 38.9		82	
SCL e11-TS-30-3-575	30	60	1304	70	70	91.7%	575	28.6	10.6	86	489.4

Motors include normally closed thermal protector, 1.15 S.F. (60 Hz), tropicalized windings, Class F (B) insulation, and are suitable for use with a VFD (Contact FPZ for pneumatic and speed limits when used with a VFD).

<sup>1</sup>Starting current ratio x fla = starting current

<sup>2</sup>Noise level measured at a distance of 1 m with inlet and outlet ports piped in accordance to ISO 3744

Data is subject to change without notice.

### Recommended Accessories

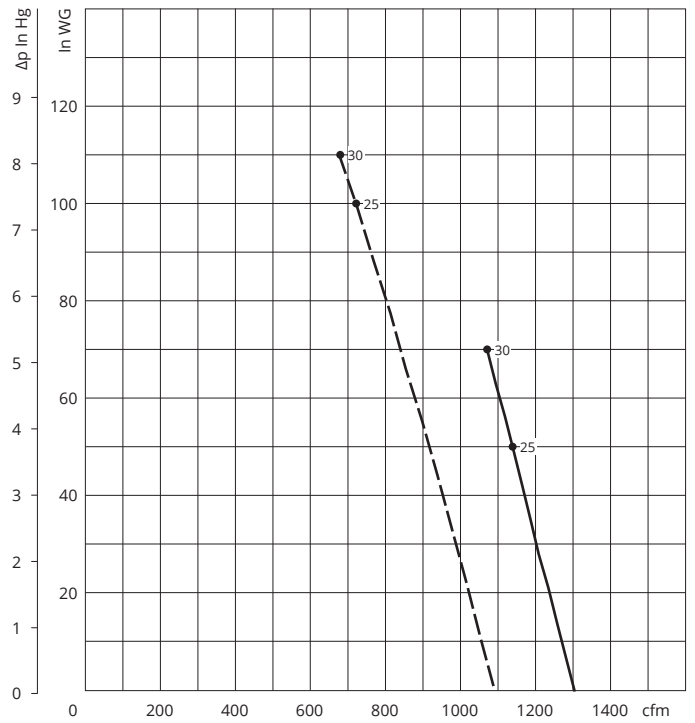
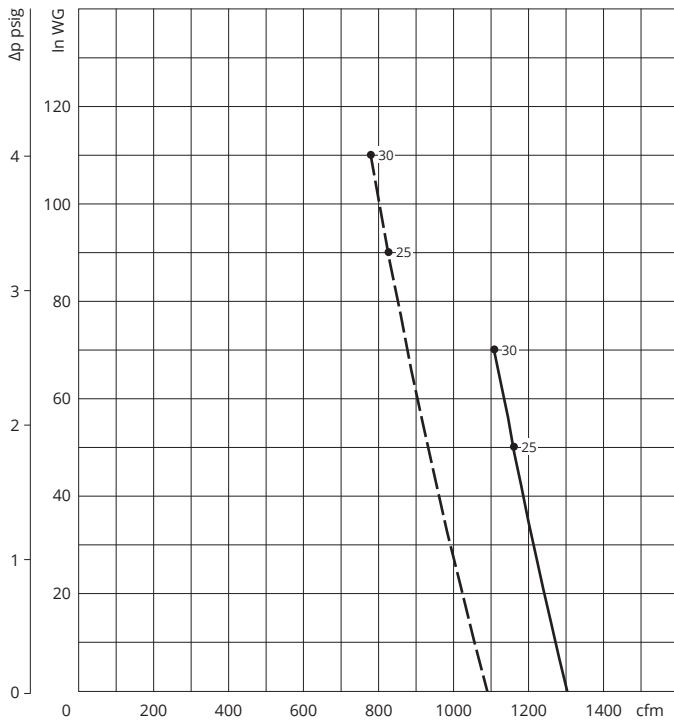
Description	Pressure Safety Valve	Vacuum Safety Valve	Pressure Filter	Vacuum Filter	Check Valve
Part number	(2) VRL9 (25 HP) <sup>3</sup>	(2) VRL9 (25 HP) <sup>3</sup>	FL10	CTD-375P-500C	CV5-502M-1330
	(2) VRL9 (30 HP) <sup>3</sup>	(2) VRL9 (30 HP) <sup>3</sup>			

<sup>3</sup>Valve selections are based on 60 Hz and standard air. Valves are supplied uncalibrated. Safety valves are easy to calibrate, but can be ordered with factory calibration.

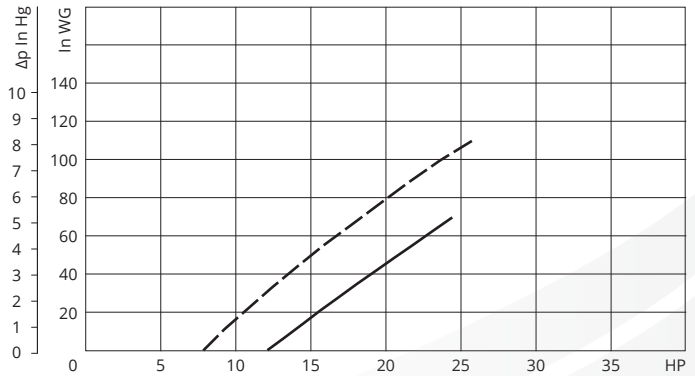
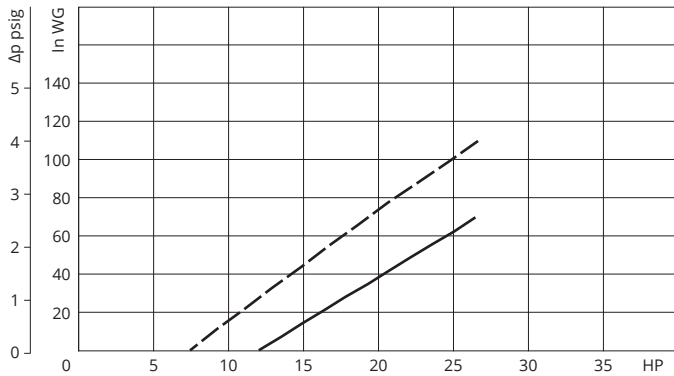
## PRESSURE

## VACUUM

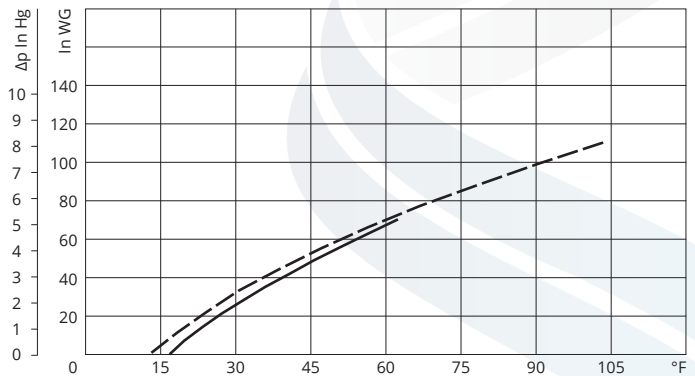
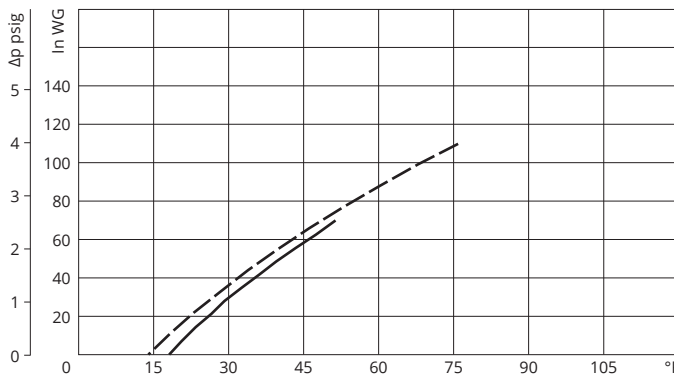
CAPACITY



ABSORBED POWER



TEMPERATURE INCREASE



Curves refer to air at 68°F temperature and 29.92 In Hg atmospheric pressure (abs) measured at inlet port.  
Values for flow, power consumption and temperature rise: +/-10% tolerance.  
Data subject to change without notice.

**KEY**    - - - 50 Hz  
          — 60 Hz