

## CP Series

CP Series rotary blowers are designed to be interchangeable with equivalent sizes of Roots Universal RAI®, and many Sutorbilt® Legend® blowers. CP Series models are rated up to 15 PSIG discharge pressure or 16" Hg dry vacuum. All models have sight glasses and triple lip seals as standard features.

### Reduced Noise Versions Available

CP Series standard models feature a bi-lobe design. Many models are available with tri-lobe rotors and a specially tuned housing to reduce blower noise.

### Triple Lip Seals

Standard on all models, triple lip seals provide improved lubrication to extend the life of the seal up to 50% also resulting in longer bearing life.

### Helical Gearing

CP Series blowers are timed with precision helical gears, keyed to the rotor shafts, not taper fit spur gears as offered by other manufacturers, which have greater backlash, can slip and lose timing. Helical gears are also quieter, reducing mechanical noise.

### Stronger Bearings

All CP Series blowers include double-row ball bearings at the gear end, stronger than single row ball bearings offered by other manufacturers. Drive shaft bearing is cylindrical roller type for additional strength against side loading from V-belt drives. As a result of this superior design, CP Series blowers offer design bearing life as much as 50% greater than models offered by other manufacturers.

### Rotors with Integral Shafts

CP Series blowers include precision machined ductile iron rotors with large, integrally cast shafts, not press fit and/or pinned shafts offered by other manufacturers, which can loosen over time and cause rotor clash.

### Versatility

CP Series blowers can be field converted from horizontal to vertical flow, or vice versa, without any special tools or additional components.



### Metric Availability

CP Series blowers are available with metric drive shaft and process connections.

### Lubrication

Many CP Series models include dual oil splash lubrication at both the gear end and drive end of the blower. Splash lubrication provides for longer bearing and seal life through improved heat dissipation versus grease lubrication.

### Material Specifications:

**Housing:** Cast iron

**End Plates:** Cast iron

**End Cover:** Cast iron

**Rotors:** Ductile iron

**Shafts:** Ductile iron, cast integrally with rotors

**Bearings:** Gear end - Double row ball, both rotors

Drive end - Cylindrical roller on drive rotor

Single row ball on driven rotor

**Drive Shaft:** Ductile iron, cast integrally with drive rotor

**Gears:** Heat treated alloy steel, helical cut

**Seals:** Lip seals on rotor shafts and drive shaft

**Lubrication:** Oil splash on gear end, grease on drive end

Models available with dual oil splash lubrication



## Performance

Pressure performance is based on inlet conditions of 14.70 PSIA (1.03 kg/sq cm) and 70°F (21°C). Vacuum performance is based on inlet temperature of 70°F (21°C) and discharge pressure of 14.70 PSIA (1.03 kg/sq cm). In conjunction with our program of continuous testing and upgrading, all specifications are subject to change without notice. All data are approximate. Request a quotation for your specific application.

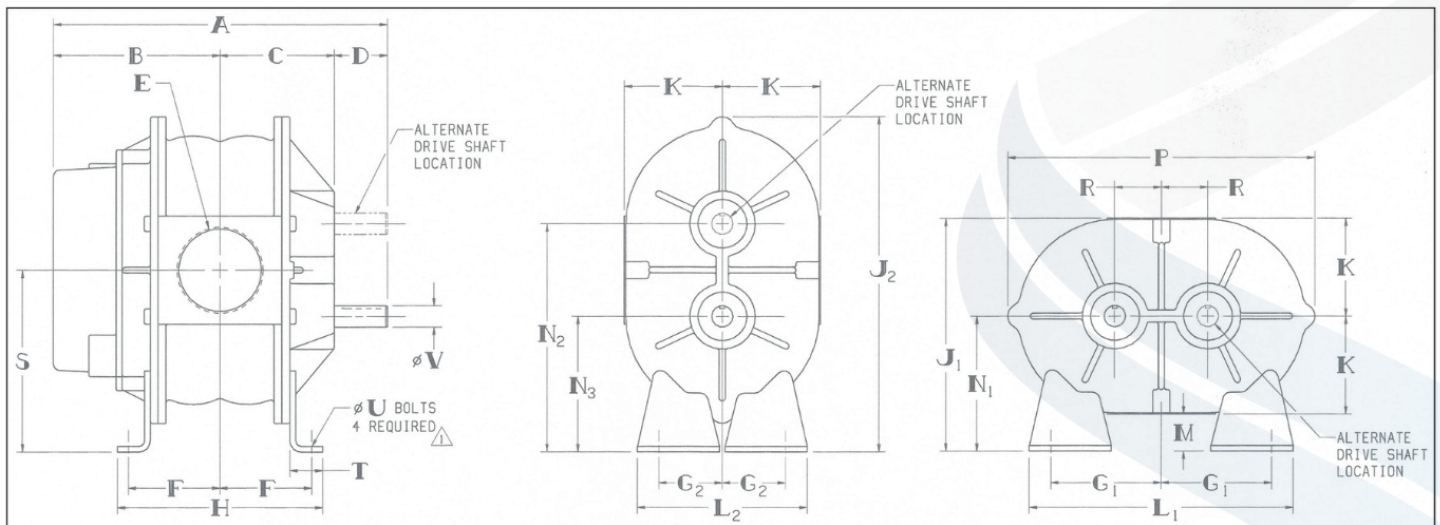
| Model | Lobe   | RPM  | 6 psig |      | 7 psig |      | 8 psig |      | 10 psig |      | 12 psig |      | 13 psig |      | 14 psig |      | 15 psig |      | 16 psig |     | 17 psig |     | 18 psig |     | Max. Vacuum |     |      |
|-------|--------|------|--------|------|--------|------|--------|------|---------|------|---------|------|---------|------|---------|------|---------|------|---------|-----|---------|-----|---------|-----|-------------|-----|------|
|       |        |      | CFM    | BHP  | CFM    | BHP  | CFM    | BHP  | CFM     | BHP  | CFM     | BHP  | CFM     | BHP  | CFM     | BHP  | CFM     | BHP  | CFM     | BHP | CFM     | BHP | CFM     | BHP | CFM         | BHP | " Hg |
| 2002  | 2-lobe | 1750 | 8      | 0.9  | 6      | 1.0  | 5      | 1.1  | 2       | 1.4  |         |      |         |      |         |      |         |      |         |     |         |     |         |     | 9           | 7   | 0.7  |
| 2002  | 2-lobe | 3600 | 38     | 1.8  | 36     | 2.1  | 35     | 2.3  | 32      | 2.8  | 29      | 3.3  |         |      |         |      |         |      |         |     |         |     |         |     | 14          | 28  | 2.1  |
| 2002  | 2-lobe | 5275 | 64     | 2.7  | 63     | 3.1  | 61     | 3.4  | 59      | 4.2  | 56      | 4.9  |         |      |         |      |         |      |         |     |         |     |         |     | 15          | 53  | 3.2  |
| 2004  | 2-lobe | 1750 | 24     | 1.6  | 21     | 1.9  |        |      |         |      |         |      |         |      |         |      |         |      |         |     |         |     |         |     | 10          | 20  | 1.4  |
| 2004  | 2-lobe | 3600 | 83     | 3.3  | 80     | 3.8  |        |      |         |      |         |      |         |      |         |      |         |      |         |     |         |     |         |     | 15          | 65  | 4.0  |
| 2004  | 2-lobe | 5275 | 137    | 4.9  | 134    | 5.6  |        |      |         |      |         |      |         |      |         |      |         |      |         |     |         |     |         |     | 15          | 118 | 5.9  |
| 3002  | 2-lobe | 1150 | 22     | 1.6  | 19     | 1.8  | 17     | 2.1  |         |      |         |      |         |      |         |      |         |      |         |     |         |     |         |     | 10          | 18  | 1.3  |
| 3002  | 2-lobe | 2700 | 94     | 3.8  | 92     | 4.3  | 89     | 4.9  | 85      | 6.0  | 81      | 7.1  |         |      |         |      |         |      |         |     |         |     |         |     | 16          | 72  | 4.8  |
| 3002  | 2-lobe | 3600 | 136    | 5.0  | 134    | 5.7  | 131    | 6.5  | 127     | 7.9  | 123     | 9.4  | 121     | 10.1 | 119     | 10.9 | 118     | 11.6 |         |     |         |     |         |     | 16          | 114 | 6.4  |
| 3003  | 2-lobe | 1150 | 30     | 2.0  | 27     | 2.4  |        |      |         |      |         |      |         |      |         |      |         |      |         |     |         |     |         |     | 10          | 26  | 1.7  |
| 3003  | 2-lobe | 2700 | 126    | 4.8  | 122    | 5.5  | 119    | 6.3  | 114     | 7.7  | 109     | 9.2  |         |      |         |      |         |      |         |     |         |     |         |     | 14          | 107 | 5.4  |
| 3003  | 2-lobe | 3600 | 181    | 6.4  | 178    | 7.4  | 175    | 8.3  | 169     | 10.3 | 164     | 12.2 |         |      |         |      |         |      |         |     |         |     |         |     | 15          | 158 | 7.7  |
| 3003  | 3-lobe | 1150 | 32     | 2.1  | 28     | 2.5  |        |      |         |      |         |      |         |      |         |      |         |      |         |     |         |     |         |     | 10          | 27  | 1.8  |
| 3003  | 3-lobe | 2700 | 132    | 5.0  | 129    | 5.8  | 126    | 6.6  |         |      |         |      |         |      |         |      |         |      |         |     |         |     |         |     | 14          | 112 | 5.7  |
| 3003  | 3-lobe | 3600 | 191    | 6.7  | 187    | 7.7  | 184    | 8.8  | 178     | 10.8 | 173     | 12.8 |         |      |         |      |         |      |         |     |         |     |         |     | 15          | 166 | 8.1  |
| 3006  | 2-lobe | 1150 | 60     | 4.8  | 55     | 5.3  |        |      |         |      |         |      |         |      |         |      |         |      |         |     |         |     |         |     | 11          | 49  | 4.5  |
| 3006  | 2-lobe | 2700 | 218    | 11.3 | 213    | 12.5 |        |      |         |      |         |      |         |      |         |      |         |      |         |     |         |     |         |     | 15          | 185 | 12.9 |
| 3006  | 2-lobe | 3600 | 310    | 15.0 | 305    | 16.6 |        |      |         |      |         |      |         |      |         |      |         |      |         |     |         |     |         |     | 15          | 277 | 17.2 |
| 3006  | 3-lobe | 1150 | 58     | 6.0  | 53     | 6.5  |        |      |         |      |         |      |         |      |         |      |         |      |         |     |         |     |         |     | 11          | 46  | 5.7  |
| 3006  | 3-lobe | 2700 | 218    | 14.0 | 213    | 15.2 |        |      |         |      |         |      |         |      |         |      |         |      |         |     |         |     |         |     | 15          | 183 | 15.7 |
| 3006  | 3-lobe | 3600 | 310    | 18.7 | 305    | 20.3 |        |      |         |      |         |      |         |      |         |      |         |      |         |     |         |     |         |     | 15          | 276 | 20.9 |
| 4002  | 2-lobe | 850  | 18     | 1.5  | 15     | 1.7  |        |      |         |      |         |      |         |      |         |      |         |      |         |     |         |     |         |     | 10          | 14  | 1.3  |
| 4002  | 2-lobe | 1760 | 73     | 3.1  | 70     | 3.6  | 68     | 4.1  | 63      | 5.0  | 59      | 5.9  | 57      | 6.4  |         |      |         |      |         |     |         |     |         |     | 14          | 58  | 3.5  |
| 4002  | 2-lobe | 3600 | 184    | 6.4  | 182    | 7.4  | 179    | 8.3  | 175     | 10.2 | 171     | 12.1 | 169     | 13.1 | 167     | 14.0 | 165     | 15.0 |         |     |         |     |         |     | 16          | 162 | 8.2  |
| 4005  | 2-lobe | 850  | 40     | 2.9  | 35     | 3.3  | 30     | 3.8  |         |      |         |      |         |      |         |      |         |      |         |     |         |     |         |     | 9           | 38  | 2.2  |
| 4005  | 2-lobe | 1760 | 150    | 5.9  | 145    | 6.9  | 140    | 7.8  | 132     | 9.6  |         |      |         |      |         |      |         |      |         |     |         |     |         |     | 14          | 121 | 6.7  |
| 4005  | 2-lobe | 3600 | 373    | 12.1 | 368    | 14.0 | 363    | 15.9 | 354     | 19.7 |         |      |         |      |         |      |         |      |         |     |         |     |         |     | 16          | 330 | 15.7 |
| 4005  | 3-lobe | 850  | 44     | 3.5  | 40     | 3.9  | 36     | 4.3  |         |      |         |      |         |      |         |      |         |      |         |     |         |     |         |     | 9           | 43  | 2.8  |
| 4005  | 3-lobe | 1760 | 149    | 7.2  | 145    | 8.1  | 141    | 9.0  | 133     | 10.8 |         |      |         |      |         |      |         |      |         |     |         |     |         |     | 14          | 124 | 8.0  |
| 4005  | 3-lobe | 3600 | 360    | 14.8 | 356    | 16.6 | 352    | 18.4 | 345     | 22.0 |         |      |         |      |         |      |         |      |         |     |         |     |         |     | 16          | 324 | 18.1 |
| 4007  | 2-lobe | 850  | 54     | 3.7  | 47     | 4.3  |        |      |         |      |         |      |         |      |         |      |         |      |         |     |         |     |         |     | 10          | 45  | 3.1  |
| 4007  | 2-lobe | 1760 | 199    | 7.7  | 192    | 8.9  |        |      |         |      |         |      |         |      |         |      |         |      |         |     |         |     |         |     | 14          | 160 | 8.8  |
| 4007  | 2-lobe | 3600 | 492    | 15.8 | 486    | 18.3 |        |      |         |      |         |      |         |      |         |      |         |      |         |     |         |     |         |     | 16          | 437 | 20.4 |
| 4007  | 3-lobe | 850  | 59     | 4.2  | 53     | 4.8  |        |      |         |      |         |      |         |      |         |      |         |      |         |     |         |     |         |     | 10          | 51  | 3.6  |
| 4007  | 3-lobe | 1760 | 193    | 8.8  | 188    | 9.9  |        |      |         |      |         |      |         |      |         |      |         |      |         |     |         |     |         |     | 14          | 162 | 9.7  |
| 4007  | 3-lobe | 3600 | 466    | 17.9 | 460    | 20.2 |        |      |         |      |         |      |         |      |         |      |         |      |         |     |         |     |         |     | 15          | 428 | 21.1 |
| 5003  | 2-lobe | 700  | 41     | 2.6  | 36     | 3.0  | 33     | 3.4  |         |      |         |      |         |      |         |      |         |      |         |     |         |     |         |     | 10          | 35  | 2.2  |
| 5003  | 2-lobe | 1760 | 180    | 6.6  | 176    | 7.6  | 172    | 8.6  | 165     | 10.7 | 159     | 12.7 | 156     | 13.7 | 153     | 14.7 | 150     | 15.7 |         |     |         |     |         |     | 14          | 156 | 7.5  |
| 5003  | 2-lobe | 2850 | 324    | 10.7 | 320    | 12.3 | 316    | 14.0 | 309     | 17.2 | 303     | 20.5 | 300     | 22.2 | 297     | 23.8 | 294     | 25.4 |         |     |         |     |         |     | 16          | 289 | 13.7 |
| 5006  | 2-lobe | 700  | 68     | 4.3  | 61     | 4.9  | 55     | 5.6  |         |      |         |      |         |      |         |      |         |      |         |     |         |     |         |     | 10          | 59  | 3.5  |
| 5006  | 2-lobe | 1760 | 302    | 10.7 | 295    | 12.4 | 289    | 14.1 | 277     | 17.5 | 266     | 20.9 | 261     | 22.6 |         |      |         |      |         |     |         |     |         |     | 14          | 262 | 12.2 |
| 5006  | 2-lobe | 2850 | 543    | 17.3 | 536    | 20.1 | 530    | 22.8 | 518     | 28.3 | 507     | 33.8 | 502     | 36.6 |         |      |         |      |         |     |         |     |         |     | 16          | 485 | 22.5 |
| 5006  | 3-lobe | 700  | 65     | 4.6  | 57     | 5.3  | 51     | 6.0  |         |      |         |      |         |      |         |      |         |      |         |     |         |     |         |     | 10          | 55  | 3.9  |
| 5006  | 3-lobe | 1760 | 300    | 11.7 | 293    | 13.4 | 286    | 15.1 | 273     | 18.5 | 262     | 21.9 | 257     | 23.6 |         |      |         |      |         |     |         |     |         |     | 14          | 257 | 13.2 |
| 5006  | 3-lobe | 2850 | 542    | 18.9 | 535    | 21.7 | 528    | 24.4 | 515     | 30.0 | 504     | 35.5 | 499     | 38.2 |         |      |         |      |         |     |         |     |         |     | 16          | 480 | 24.1 |
| 5009  | 2-lobe | 700  | 130    | 6.1  | 122    | 7.1  |        |      |         |      |         |      |         |      |         |      |         |      |         |     |         |     |         |     | 11          | 111 | 5.5  |
| 5009  | 2-lobe | 1760 | 472    | 15.4 | 464    | 17.9 |        |      |         |      |         |      |         |      |         |      |         |      |         |     |         |     |         |     | 14          | 427 | 17.6 |
| 5009  | 2-lobe | 2850 | 824    | 25.0 | 816    | 29.0 |        |      |         |      |         |      |         |      |         |      |         |      |         |     |         |     |         |     | 15          | 769 | 30.4 |
| 5009  | 3-lobe | 700  | 116    | 6.8  | 107    | 7.8  | 98     | 8.8  |         |      |         |      |         |      |         |      |         |      |         |     |         |     |         |     | 11          | 93  | 6.1  |
| 5009  | 3-lobe | 1760 | 473    | 17.0 | 464    | 19.6 | 455    | 22.2 |         |      |         |      |         |      |         |      |         |      |         |     |         |     |         |     | 14          | 417 | 19.2 |
| 5009  | 3-lobe | 2850 | 841    | 27.5 | 831    | 31.7 | 822    | 35.9 |         |      |         |      |         |      |         |      |         |      |         |     |         |     |         |     | 15          | 773 | 33.2 |
| 6005  | 2-lobe | 700  | 91     | 4.9  | 84     | 5.6  | 78     | 6.4  | 67      | 7.9  |         |      |         |      |         |      |         |      |         |     |         |     |         |     | 12          | 68  | 4.8  |
| 6005  | 2-lobe | 1760 | 352    | 12.3 | 345    | 14.2 | 339    | 16.1 | 328     | 19.9 | 318     | 23.6 | 313     | 25.5 | 309     | 27.4 | 304     | 29.3 |         |     |         |     |         |     | 16          | 296 | 15.8 |
| 6005  | 2-lobe | 2350 | 497    | 16.4 | 490    | 19.0 | 484    | 21.5 | 473     | 26.5 | 463     | 31.6 | 458     | 34.1 | 454     | 36.6 | 449     | 39.1 |         |     |         |     |         |     | 16          | 442 | 21.1 |
| 6008  | 2-lobe | 700  | 146    | 7.6  | 135    | 8.8  | 126    | 10.0 | 108     | 12.4 |         |      |         |      |         |      |         |      |         |     |         |     |         |     | 12          | 109 | 7.5  |
| 6008  | 2-lobe | 1760 | 565    | 19.2 | 554    | 22.2 | 544    | 25.2 | 527     | 31.3 | 510     | 37.4 | 503     | 40.4 | 496     | 43.4 |         |      |         |     |         |     |         |     | 15          | 490 | 23.3 |
| 6008  | 2-lobe | 2350 | 798    | 25.6 | 787    | 29.6 | 777    | 33.7 | 760     | 41.8 | 744     | 49.9 | 736     | 53.9 | 729     | 58.0 |         |      |         |     |         |     |         |     | 16          | 709 | 33.1 |

### Performance continued

| Model | Lobe   | RPM  | 6 psig |      | 7 psig |      | 8 psig |      | 10 psig |      | 12 psig |      | 13 psig |      | 14 psig |      | 15 psig |      | 16 psig |     | 17 psig |     | 18 psig |     | Max. Vacuum |      |      |      |
|-------|--------|------|--------|------|--------|------|--------|------|---------|------|---------|------|---------|------|---------|------|---------|------|---------|-----|---------|-----|---------|-----|-------------|------|------|------|
|       |        |      | CFM    | BHP  | CFM    | BHP  | CFM    | BHP  | CFM     | BHP  | CFM     | BHP  | CFM     | BHP  | CFM     | BHP  | CFM     | BHP  | CFM     | BHP | CFM     | BHP | CFM     | BHP | " Hg        | CFM  | BHP  |      |
| 6015  | 2-lobe | 700  | 273    | 13.9 | 254    | 16.2 |        |      |         |      |         |      |         |      |         |      |         |      |         |     |         |     |         |     | 10          | 247  | 11.5 |      |
| 6015  | 2-lobe | 1760 | 1058   | 35.0 | 1038   | 40.7 |        |      |         |      |         |      |         |      |         |      |         |      |         |     |         |     |         |     | 14          | 943  | 40.0 |      |
| 6015  | 2-lobe | 2350 | 1494   | 46.8 | 1475   | 54.4 |        |      |         |      |         |      |         |      |         |      |         |      |         |     |         |     |         |     | 14          | 1380 | 53.4 |      |
| 7006  | 2-lobe | 650  | 171    | 7.2  | 163    | 8.3  | 157    | 9.5  | 144     | 11.8 | 133     | 14.0 | 128     | 15.2 |         |      |         |      |         |     |         |     |         |     | 13          | 137  | 7.6  |      |
| 7006  | 2-lobe | 1760 | 617    | 19.5 | 610    | 22.6 | 603    | 25.7 | 591     | 31.8 | 579     | 38.0 | 574     | 41.1 | 569     | 44.2 | 564     | 47.3 |         |     |         |     |         |     |             | 16   | 556  | 25.2 |
| 7006  | 2-lobe | 2050 | 734    | 22.7 | 726    | 26.3 | 719    | 29.9 | 707     | 37.1 | 696     | 44.3 | 691     | 47.8 | 686     | 51.4 | 681     | 55.0 |         |     |         |     |         |     |             | 16   | 672  | 29.4 |
| 7011  | 2-lobe | 650  | 322    | 12.9 | 310    | 15.0 | 298    | 17.1 | 277     | 21.3 |         |      |         |      |         |      |         |      |         |     |         |     |         |     | 13          | 264  | 13.7 |      |
| 7011  | 2-lobe | 1760 | 1142   | 35.0 | 1129   | 40.6 | 1117   | 46.3 | 1096    | 57.6 |         |      |         |      |         |      |         |      |         |     |         |     |         |     | 16          | 1035 | 45.5 |      |
| 7011  | 2-lobe | 2050 | 1356   | 40.7 | 1343   | 47.3 | 1331   | 53.9 | 1310    | 67.1 |         |      |         |      |         |      |         |      |         |     |         |     |         |     | 16          | 1249 | 53.0 |      |
| 7018  | 2-lobe | 650  | 560    | 20.8 |        |      |        |      |         |      |         |      |         |      |         |      |         |      |         |     |         |     |         |     | 10          | 536  | 17.1 |      |
| 7018  | 2-lobe | 1760 | 1892   | 56.2 |        |      |        |      |         |      |         |      |         |      |         |      |         |      |         |     |         |     |         |     | 12          | 1830 | 55.3 |      |
| 7018  | 2-lobe | 2050 | 2240   | 65.5 |        |      |        |      |         |      |         |      |         |      |         |      |         |      |         |     |         |     |         |     | 12          | 2178 | 64.4 |      |

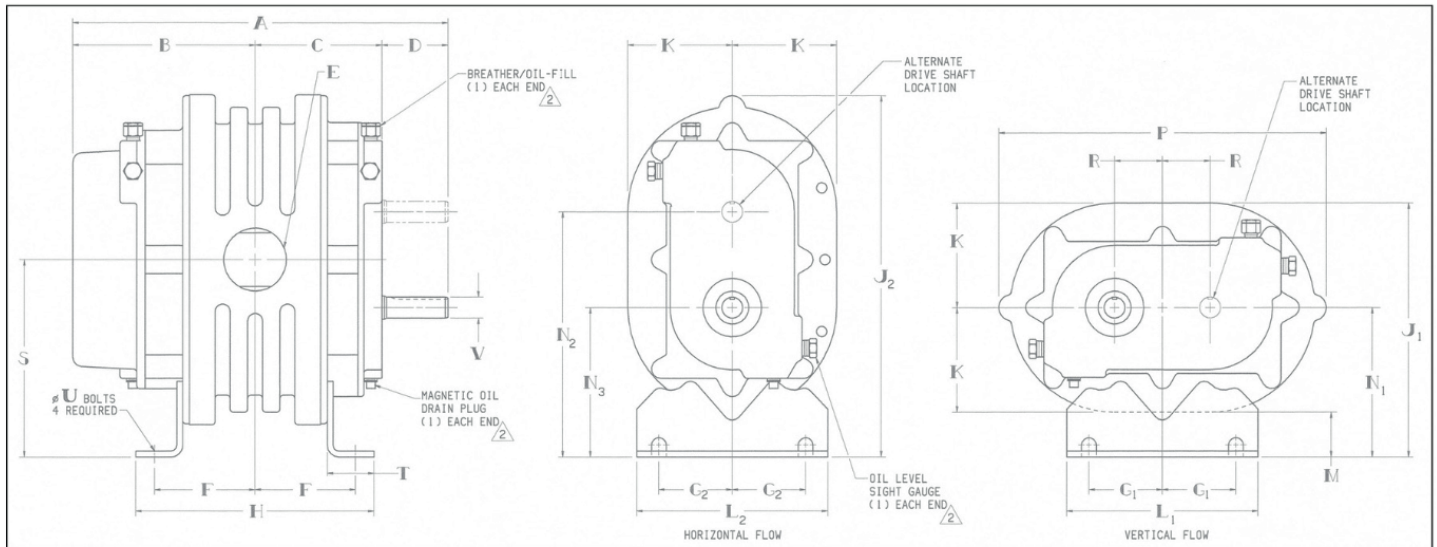
### Dimensions: Standard Models/6

| Model Size | A     | B     | C     | D    | E          | F     | G1   | G2   | H     | J1    | J2    | K    | L1    | L2    | M     | N1    | N2    | N3    | P     | R    | S     | T    | U    | V     | Weight (lbs.) |
|------------|-------|-------|-------|------|------------|-------|------|------|-------|-------|-------|------|-------|-------|-------|-------|-------|-------|-------|------|-------|------|------|-------|---------------|
| 2002       | 10.13 | 5.00  | 2.63  | 2.50 | 1" NPT     | 2.00  | 1.75 | 1.75 | 5.06  | 6.88  | 9.69  | 3.13 | 5.13  | .63   | 3.75  | 6.25  | 3.75  | 9.38  | 1.25  | 5.00 | 1.25  | 3/8" | .625 | 41    |               |
| 2004       | 12.13 | 6.00  | 3.63  | 2.50 | 2" NPT     | 3.00  | 1.75 | -    | 7.06  | 6.88  | 9.69  | 3.13 | 5.13  | .63   | 3.75  | 6.25  | 3.75  | 9.38  | 1.25  | 5.00 | 1.25  | 3/8" | .625 | 53    |               |
| 3002       | 11.50 | 5.69  | 3.38  | 2.44 | 1 1/2" NPT | 2.69  | 2.69 | 2.69 | 6.75  | 8.94  | 12.81 | 3.94 | 7.25  | 5.00  | 5.00  | 8.50  | 5.00  | 12.19 | 1.75  | 6.75 | 1.75  | 3/4" | .875 | 78    |               |
| 3003       | 12.38 | 6.13  | 3.81  | 2.44 | 2" NPT     | 3.13  | 2.69 | 2.69 | 7.63  | 8.94  | 12.81 | 3.94 | 7.25  | 5.00  | 5.00  | 8.50  | 5.00  | 12.19 | 1.75  | 6.75 | 1.75  | 3/4" | .875 | 83    |               |
| 3006       | 14.75 | 7.31  | 5     | 2.44 | 2 1/2" NPT | 4.31  | 2.69 | 2.69 | 10.00 | 8.94  | 12.81 | 3.94 | 7.25  | 5.00  | 5.00  | 8.50  | 5.00  | 12.19 | 1.75  | 6.75 | 1.75  | 3/4" | .875 | 113   |               |
| 4002       | 12.94 | 6.25  | 3.69  | 3.00 | 1 1/2" NPT | 2.75  | 3.07 | 3.07 | 7.25  | 10.63 | 15.13 | 4.38 | 8.00  | 8.00  | 6.25  | 6.25  | 10.25 | 6.25  | 13.69 | 2.00 | 8.25  | 2.00 | 1/2" | .875  | 95            |
| 4005       | 15.69 | 7.63  | 5.06  | 3.00 | 2 1/2" NPT | 4.13  | 3.07 | 3.07 | 10.00 | 10.63 | 15.13 | 4.38 | 8.00  | 8.00  | 6.25  | 6.25  | 10.25 | 6.25  | 13.69 | 2.00 | 8.25  | 2.00 | 1/2" | .875  | 119           |
| 4007       | 17.44 | 8.50  | 5.94  | 3.00 | 3" NPT     | 5.00  | 3.07 | 3.07 | 11.75 | 10.63 | 15.13 | 4.38 | 8.00  | 8.00  | 6.25  | 6.25  | 10.25 | 6.25  | 13.69 | 2.00 | 8.25  | 2.00 | 1/2" | .875  | 138           |
| 5003       | 15.25 | 7.38  | 4.50  | 3.38 | 2 1/2" NPT | 3.50  | 3.50 | 3.50 | 8.44  | 12.13 | 17.38 | 5.38 | 10.50 | 10.50 | 6.75  | 6.75  | 11.25 | 6.25  | 17.19 | 2.50 | 8.75  | 1.88 | 5/8" | 1.125 | 152           |
| 5006       | 17.88 | 8.69  | 5.81  | 3.38 | 4" NPT     | 4.81  | 3.50 | 3.50 | 11.06 | 12.13 | 17.38 | 5.38 | 10.50 | 10.50 | 6.75  | 6.75  | 11.25 | 6.25  | 17.19 | 2.50 | 8.75  | 1.88 | 5/8" | 1.125 | 185           |
| 5009       | 20.88 | 10.19 | 7.31  | 3.38 | 4" NPT     | 6.25  | 3.50 | 3.50 | 14.06 | 12.13 | 17.38 | 5.38 | 10.50 | 10.50 | 6.75  | 6.75  | 11.25 | 6.25  | 17.19 | 2.50 | 8.75  | 1.88 | 5/8" | 1.125 | 222           |
| 6005       | 18.69 | 9.38  | 5.63  | 3.69 | 3" NPT     | 4.25  | 4.13 | 4.06 | 10.00 | 15.00 | 21.69 | 6.25 | 17.06 | 11.00 | 8.75  | 8.75  | 14.75 | 8.75  | 19.81 | 3.00 | 11.75 | 2.13 | 3/4" | 1.375 | 250           |
| 6008       | 21.69 | 10.88 | 7.13  | 3.69 | 5" NPT     | 5.75  | 4.13 | 4.06 | 13.00 | 15.00 | 21.69 | 6.25 | 17.06 | 11.00 | 8.75  | 8.75  | 14.75 | 8.75  | 19.81 | 3.00 | 11.75 | 2.13 | 3/4" | 1.375 | 310           |
| 6015       | 28.69 | 14.38 | 10.63 | 3.69 | 6" FLG     | 9.25  | 7.13 | 7.17 | 20.00 | 16.25 | 26.13 | 7.50 | 21.06 | 14.00 | 11.00 | 11.00 | 18.00 | 11.00 | 23.25 | 3.50 | 14.50 | 2.38 | 3/4" | 1.562 | 456           |
| 7006       | 20.31 | 10.31 | 5.94  | 4.06 | 4" NPT     | 4.88  | 5.50 | 7.17 | 11.75 | 20.69 | 26.13 | 9.69 | 21.06 | 14.00 | 11.00 | 11.00 | 18.00 | 11.00 | 23.25 | 3.50 | 14.50 | 2.38 | 3/4" | 1.562 | 425           |
| 7011       | 25.31 | 12.81 | 8.44  | 4.06 | 6" FLG     | 7.38  | 9.00 | 7.17 | 16.75 | 19.50 | 26.13 | 8.50 | 21.06 | 14.00 | 11.00 | 11.00 | 18.00 | 11.00 | 23.25 | 3.50 | 14.50 | 2.38 | 3/4" | 1.562 | 555           |
| 7018       | 32.31 | 16.31 | 11.94 | 4.06 | 8" FLG     | 10.88 | 9.00 | 7.17 | 23.75 | 19.50 | 26.13 | 8.50 | 21.06 | 14.00 | 11.00 | 11.00 | 18.00 | 11.00 | 23.25 | 3.50 | 14.50 | 2.38 | 3/4" | 1.562 | 675           |



## Dimensions: Splash Lube Models/7

| Model Size | A     | B     | C     | D    | E       | F     | G1   | G2   | H     | J1    | J2    | K    | L1    | L2    | M    | N1   | N2    | N3   | P     | R    | S     | T    | U  | V     | Weight (lbs.) |
|------------|-------|-------|-------|------|---------|-------|------|------|-------|-------|-------|------|-------|-------|------|------|-------|------|-------|------|-------|------|----|-------|---------------|
| 3002       | 11.50 | 5.69  | 3.75  |      | 1½" NPT | 2.63  |      |      | 6.75  |       |       |      |       |       |      |      |       |      |       |      |       |      |    |       | 82            |
| 3003       | 12.38 | 6.13  | 4.19  | 2.06 | 2" NPT  | 3.00  | 2.68 | 2.69 | 7.63  | 8.94  | 12.81 | 3.94 | 7.25  | 7.25  | 1.06 | 5.00 | 8.50  | 5.00 | 12.19 | 1.75 | 6.75  | 1.75 | ¾" | .875  | 88            |
| 3006       | 14.75 | 7.31  | 5.38  |      | 2½" NPT | 4.30  |      |      | 10.00 |       |       |      |       |       |      |      |       |      |       |      |       |      |    |       | 120           |
| 4002       | 12.94 | 6.25  | 3.94  |      | 1½" NPT | 2.75  |      |      | 7.25  |       |       |      |       |       |      |      |       |      |       |      |       |      |    |       | 102           |
| 4005       | 15.69 | 7.63  | 5.31  | 2.75 | 2½" NPT | 4.13  | 3.07 | 3.07 | 10.00 | 10.63 | 15.13 | 4.38 | 8.00  | 8.00  | 1.88 | 6.25 | 10.25 | 6.25 | 13.69 | 2.00 | 8.25  | 2.00 | ½" | .875  | 127           |
| 4007       | 17.44 | 8.50  | 6.19  |      | 3" NPT  | 5.00  |      |      | 11.75 |       |       |      |       |       |      |      |       |      |       |      |       |      |    |       | 146           |
| 5003       | 15.25 | 7.38  | 4.81  |      | 2½" NPT | 3.50  |      |      | 8.44  |       |       |      |       |       |      |      |       |      |       |      |       |      |    |       | 161           |
| 5006       | 17.88 | 8.69  | 6.13  | 3.06 | 4" NPT  | 4.81  | 3.50 | 3.50 | 11.06 | 12.13 | 17.38 | 5.38 | 10.50 | 10.50 | 1.38 | 6.75 | 11.25 | 6.25 | 17.19 | 2.50 | 8.75  | 1.88 | ⅝" | 1.125 | 196           |
| 5009       | 20.88 | 10.19 | 7.63  |      | 4" NPT  | 6.25  |      |      | 14.06 |       |       |      |       |       |      |      |       |      |       |      |       |      |    |       | 235           |
| 6005       | 18.06 | 9.38  | 5.63  |      | 3" NPT  | 4.25  |      |      | 10.00 | 15.00 |       | 6.25 |       |       |      |      |       |      |       |      |       |      |    |       | 255           |
| 6008       | 21.06 | 10.88 | 7.13  | 3.69 | 5" NPT  | 5.75  | 4.13 | 4.06 | 13.00 | 15.00 | 21.69 | 6.25 | 17.06 | 11.00 | 2.50 | 8.75 | 14.75 | 8.75 | 19.81 | 3.00 | 11.75 | 2.13 | ¾" | 1.375 | 315           |
| 6015       | 28.06 | 14.38 | 10.63 |      | 6" FLG  | 10.88 | 7.13 |      | 20.00 | 16.25 |       | 7.50 |       |       |      |      |       |      |       |      |       |      |    |       | 461           |



Values shown are approximate and should not be used for construction. Certified drawings are available through your local M-D Pneumatics Sales Professional.

The tri-lobe CP Series units have a cast-in noise reduction on the discharge port. This will reduce the sound level of the blower 3-5dB, or by half.